

PRECISION LEVELLING WEDGES

BILZ PRECISION LEVELLING WEDGES ARE MACHINE WEDGES FOR HIGHLY PRECISE LEVELLING WHEN INSTALLING AND STORING MACHINES, ESPECIALLY WITH HIGH LOADS



All information about our precision levelling wedges is also available on our website.

Due to their large contact area Bilz precision levelling wedges for vibration and structure-borne noise insulation offer optimum support and stiffening of the machine bed.

They are available in a wide range of sizes and dimensions as free-standing, bolt-on to the machine or bolt-through to the foundation design.

NOTES

Effective vibration insulation also at very high loads

The proven design principle enables the machine to be quickly levelled to a degree of levelling in the 1/100mm range even at loads of 100 tons per wedge. The powerful self-locking effect of the levelling bolt prevents self-adjustment under the effects of vibration.

Depending on the application, their use in conjunction with Bilz insulation pads creates the perfect strength coherence and very effective vibration insulation.

- You will find the insulation pad type used in the type designation, e.g. PKA 3-0 is equipped with isolation pad B0, PKA 5-4 with isolation pad B4.
- We would be happy to provide special solutions with regard to painting, insulation pad configuration and dimensions on request.
- The specified maximum load is composed of the static and dynamic load of the machine. The optimum insulation effect is achieved at approx. 80-90 % of the specified maximum load.
- Permissible temperature range: -20 °C to +80 °C
- The general tolerances according to ISO 2768 vL apply to the length and width specifications.
- The height specifications in the centre position are subject to a tolerance of $\pm 1\text{mm}$.

Please contact us if the appropriate insulation pad configuration for your application is not listed. We are also able to develop a wide range of special solutions. We are always happy to offer our advice.



SPANNER SIZES FOR BILZ PRECISION LEVELLING WEDGES

Type	Inside	Outside
PK 1	SW 6	SW 13
PK 2	SW 10	SW 19
PK 2.5	SW 10	SW 19
PK 3	SW 12	SW 22
PK 3.2	SW 12	SW 22
PK 3.5	SW 12	SW 22
PK 3.8	SW 12	SW 22
PK 4	SW 14	SW 27
PK 4.5	SW 14	SW 27
PK 5	SW 14	SW 27
PK 5.5	SW 14	SW 27
PK 6	SW 14	SW 27
PK 7	SW 17	SW 32
PK 8	SW 19	SW 41
PK 9	SW 22	SW 50

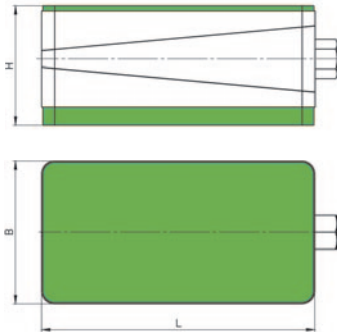
Type	Inside	Outside
PKA / PKD 1	SW 10	SW 19
PKA / PKD 2	SW 12	SW 22
PKA / PKD 3	SW 14	SW 27
PKA / PKD 4	SW 14	SW 27
PKA / PKD 5	SW 14	SW 27
PKA / PKD 6	SW 17	SW 32
PKA / PKD 7	SW 19	SW 41
PKA / PKD 8	SW 22	SW 50

Type	Outside
PKA / PKD 1-AL	SW 19
PKA / PKD 2-AL	SW 22
PKA / PKD 3-AL	SW 27
PKA / PKD 4-AL	SW 27

Type	Outside
PKAK / PKDK 1-AL	SW 19
PKAL / PKDK 2-AL	SW 22
PKAK / PKDK 3-AL	SW 27
PKAL / PKDK 4-AL	SW 27

SERIES PK

Free-standing precision levelling wedges especially for machines without mounting holes in the machine bed.



Description

- PK - free-standing precision levelling wedge
- Especially for machines without mounting holes in the machine bed
- Suitable levelling wedges are also available for existing installations
- **Colour:** RAL 7037, dusty grey

Please contact us if the appropriate insulation pad configuration for your application is not listed. We are also able to develop a wide range of special solutions. We are always happy to offer our advice.

A-MOUNTING



- Universally usable for machine tools and injection moulding machines.
- Especially for machines with high horizontal forces.
- Very high sliding prevention performance.

Upper side: Anti-slip pad BR7-1

Underside: Insulation pad B4-1

Type PK A-mounting	Item no.	max. load N/Stk.	L mm	B mm	H centre position mm	Adjustment range mm
PK 1-A	02-0004	5.400	105	55	59	+4/-5
PK 2-A	02-0011	10.000	150	75	63	+5/-6
PK 2.5-A	02-0104	12.000	115	115	67	+4/-5
PK 3-A	02-0025	18.000	200	95	67	+5/-5
PK 3/72-A	02-0019	18.000	200	95	94	+5/-4
PK 3.2-A	02-0110	20.000	150	150	68	+5/-6
PK 3.5-A	02-0116	26.000	115	250	92	+4/-8
PK 3.8-A	02-0122	26.000	170	170	76	+6/-8
PK 4-A	02-0042	38.000	200	200	70	+5/-7
PK 4/72-A	02-0033	38.000	200	200	94	+5/-7
PK 4.5-A	02-0128	39.000	180	230	84	+9/-9
PK 5-A	02-0050	48.000	200	250	94	+10/-7
PK 5.5-A	02-0134	73.000	300	250	106	+10/-8
PK 6-A	02-0057	80.000	250	330	94	+7/-10
PK 7-A	02-0064	117.500	300	400	95	+8/-12
PK 8-A	02-0071	195.500	400	500	95	+8/-14
PK 9-A	02-0078	294.500	500	600	137	+12/-15

B-MOUNTING



- Special design for CNC lathes, grinding machines, boring and milling machines, processing centres, transfer lines.

Upper side: Anti-slip pad BS

Underside: Insulation pad B0

Typ PK B-mounting	Item no.	max. load N/Stk.	L mm	B mm	H centre position mm	Adjustment range mm
PK 1-B	02-0005	10.000	105	55	54	+4/-5
PK 2-B	02-0012	21.000	150	75	58	+5/-6
PK 2.5-B	02-0105	25.000	115	115	62	+4/-5
PK 3-B	02-0026	36.000	200	95	62	+5/-5
PK 3/72-B	02-0020	36.000	200	95	89	+5/-4
PK 3.2-B	02-0111	43.000	150	150	63	+5/-6
PK 3.5-B	02-0117	55.000	115	250	87	+4/-8
PK 3.8-B	02-0123	55.000	170	170	71	+6/-8
PK 4-B	02-0043	77.000	200	200	65	+5/-7
PK 4/72-B	02-0034	77.000	200	200	89	+5/-7
PK4.5-B	02-0129	79.500	180	230	79	+9/-9
PK 5-B	02-0051	97.000	200	250	89	+10/-7
PK 5.5-B	02-0135	144.000	300	250	101	+10/-8
PK 6-B	02-0058	161.000	250	330	89	+7/-10
PK 7-B	02-0065	236.000	300	400	90	+8/-12
PK 8-B	02-0072	393.000	400	500	90	+8/-14
PK 9-B	02-0079	591.000	500	600	132	+12/-15

C-MOUNTING

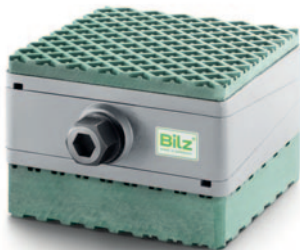


- Highly effective vibration insulation.
- Especially suitable for use on upper floors.

Upper side: Anti-slip pad BS
Underside: Insulation pad B32

Typ PK C-mounting	Item no.	max. load N/Stk.	L mm	B mm	H centre position mm	Adjustment range mm
PK 1-C	02-0006	4.600	105	55	64	+4/-5
PK 2-C	02-0013	8.700	150	75	68	+5/-6
PK 2.5-C	02-0106	10.000	115	115	72	+4/-5
PK 3-C	02-0027	14.600	200	95	72	+5/-5
PK 3/72-C	02-0021	14.600	200	95	99	+5/-4
PK 3.2-C	02-0112	17.000	150	150	73	+5/-6
PK 3.5-C	02-0118	22.000	115	250	97	+4/-8
PK 3.8-C	02-0124	22.000	170	170	81	+6/-8
PK 4-C	02-0044	31.000	200	200	75	+5/-7
PK 4/72-C	02-0035	31.000	200	200	99	+5/-7
PK 4.5-C	02-0133	32.000	180	230	89	+9/-9
PK 5-C	02-0052	38.900	200	250	99	+10/-7
PK 5.5-C	02-0136	58.000	300	250	111	+10/-8
PK 6-C	02-0059	64.500	250	330	99	+7/-10
PK 7-C	02-0066	94.500	300	400	100	+8/-12
PK 8-C	02-0073	167.000	400	500	100	+8/-14
PK 9-C	02-0080	236.000	500	600	142	+12/-15

D-MOUNTING



- For machines with extremely high dynamic forces, such as presses, punches, shears.

Upper side: Anti-slip pad BR7-1
Underside: Insulation pad B5

Typ PK D-mounting	Item no.	max. load N/Stk.	L mm	B mm	H centre position mm	Adjustment range mm
PK 1-D	02-0007	8.700	105	55	69	+4/-5
PK 2-D	02-0014	17.000	150	75	73	+5/-6
PK 2.5-D	02-0107	20.000	115	115	77	+4/-5
PK 3-D	02-0028	29.000	200	95	77	+5/-5
PK 3/72-D	02-0022	29.000	200	95	104	+5/-4
PK 3.2-D	02-0113	34.500	150	150	78	+5/-6
PK 3.5-D	02-0119	44.500	115	250	102	+4/-8
PK 3.8-D	02-0125	44.500	170	170	86	+6/-8
PK 4-D	02-0045	62.000	200	200	80	+5/-7
PK 4/72-D	02-0036	62.000	200	200	104	+5/-7
PK 4.5-D	02-0130	64.000	180	230	94	+9/-9
PK 5-D	02-0053	77.000	200	250	104	+10/-7
PK 5.5-D	02-0137	116.000	300	250	116	+10/-8
PK 6-D	02-0060	129.000	250	330	104	+7/-10
PK 7-D	02-0067	189.000	300	400	105	+8/-12
PK 8-D	02-0074	314.000	400	500	105	+8/-14
PK 9-D	02-0081	470.000	500	600	147	+12/-15

SERIES PK

Free-standing precision levelling wedges especially for machines without mounting holes in the machine bed.

E-MOUNTING



- For machines and systems where vibration insulation is not required.
- Good frictional connection due to anti-slip pads.
- Very low overall height.

Upper side: Anti-slip pad BS

Underside: Anti-slip pad BS

Typ PK E-mounting	Item no.	max. load N/Stk.	L mm	B mm	H centre position mm	Adjustment range mm
PK 1-E	02-0008	16.000	105	55	41	+4/-5
PK 2-E	02-0015	32.500	150	75	45	+5/-6
PK 2.5-E	02-0108	38.000	115	115	49	+4/-5
PK 3-E	02-0029	54.900	200	95	49	+5/-5
PK 3/72-E	02-0023	54.900	200	95	76	+5/-4
PK 3.2-E	02-0114	65.000	150	150	50	+5/-6
PK 3.5-E	02-0120	83.500	115	250	74	+4/-8
PK 3.8-E	02-0126	83.500	170	170	58	+6/-8
PK 4-E	02-0046	116.400	200	200	52	+5/-7
PK 4/72-E	02-0037	116.400	200	200	76	+5/-7
PK 4.5-E	02-0131	120.000	180	230	66	+9/-9
PK 5-E	02-0054	145.500	200	250	76	+10/-7
PK 5.5-E	02-0138	218.000	300	250	88	+10/-8
PK 6-E	02-0061	242.000	250	330	76	+7/-10
PK 7-E	02-0068	355.000	300	400	77	+8/-12
PK 8-E	02-0075	589.500	400	500	77	+8/-14
PK 9-E	02-0082	887.000	500	600	119	+12/-15

F-MOUNTING



- For extremely high loads.
- Very high levelling constancy.

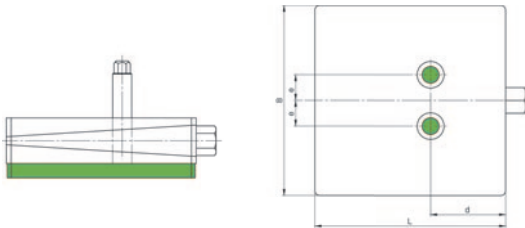
Upper side: Anti-slip pad BS

Underside: Insulation pad B6

Typ PK F-mounting	Item no.	max. load N/Stk.	L mm	B mm	H centre position mm	Adjustment range mm
PK 1-F	02-0009	19.000	105	55	54	+4/-5
PK 2-F	02-0016	38.000	150	75	58	+5/-6
PK 2.5-F	02-0109	44.500	115	115	62	+4/-5
PK 3-F	02-0030	64.000	200	95	62	+5/-5
PK 3/72-F	02-0024	64.000	200	95	89	+5/-4
PK 3.2-F	02-0115	75.800	150	150	63	+5/-6
PK 3.5-F	02-0121	97.000	115	250	87	+4/-8
PK 3.8-F	02-0127	97.000	170	170	71	+6/-8
PK 4-F	02-0047	135.000	200	200	65	+5/-7
PK 4/72-F	02-0039	135.000	200	200	89	+5/-7
PK 4.5-F	02-0132	139.500	180	230	79	+9/-9
PK 5-F	02-0055	170.000	200	250	89	+10/-7
PK 5.5-F	02-0139	253.000	300	250	101	+10/-8
PK 6-F	02-0062	282.000	250	330	89	+7/-10
PK 7-F	02-0069	414.000	300	400	90	+8/-12
PK 8-F	02-0076	680.000	400	500	90	+8/-14
PK 9-F	02-0083	1.035.000	500	600	132	+12/-15

SERIES PKA

Bolt-on precision levelling wedges for machines with strong forces that require a firm connection to the machine bed.



Description

- Bolt-on Bilz precision levelling wedge PKA are used for machines with large forces that require a solid connection to the machine bed, e.g. injection moulding machines, impact machines, cold extrusion presses, etc.
- The bolt-on machine feet remain in position even when the machine is lifted, significantly easing the installation of the machine.
- **Colour:** RAL 7037, dusty grey.
- **Fixing bolts:** Tables for the selection of available bolts can be found on p. 33.

BO-MOUNTING



- Suitable for lathes, boring mills, grinding machines and processing centres.

Underside: Insulation pad B0

Type PKA BO mounting	Item no.	max. load N/Stk.	L mm	B mm	H centre position mm	d mm	e mm	Internal thread	Adjustment range mm
PKA 1-0	03-0007	25.000	115	115	60	50	24	M16	+3/-3
PKA 2-0	03-0010	43.000	150	150	61	58	23	M18	+4/-4
PKA 3-0	03-0024	77.000	200	200	63	76	27	M20	+4/-6
PKA 3/72-0	03-0020	77.000	200	200	87	76	27	M20	+4/-7
PKA 4-0	03-0028	97.000	200	250	87	95	27	M20	+10/-7
PKA 5-0	03-0033	161.000	250	330	87	125	105	M24	+6/-10
PKA 6-0	03-0037	236.000	300	400	88	150	95	M24	+8/-12
PKA 7-0	03-0040	393.000	400	500	88	200	130	M24	+8/-14
PKA 8-0	03-0043	591.000	500	600	130	255	150	M30 x 2	+12/-15

B4-MOUNTING



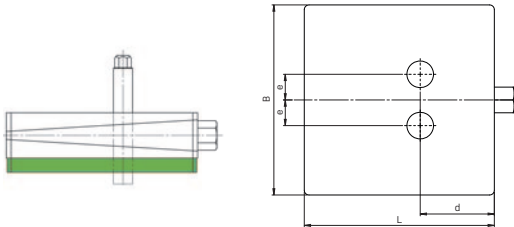
- Suitable for plastic injection moulding machines, die casting machines, planers, impact machines, cold extrusion presses etc.
- Extreme slip resistance.

Underside: Insulation pad B4

Typ PKA B4 mounting	Item no.	max. load N/Stk.	L mm	B mm	H centre position mm	d mm	e mm	Internal thread	Adjustment range mm
PKA 1-4	03-0008	12.000	115	115	60	50	24	M16	+3/-3
PKA 2-4	03-0011	20.000	150	150	61	58	23	M18	+4/-4
PKA 3-4	03-0025	38.000	200	200	63	76	27	M20	+4/-6
PKA 3/72-4	03-0021	38.000	200	200	87	76	27	M20	+4/-7
PKA 4-4	03-0030	48.000	200	250	87	95	27	M20	+10/-7
PKA 5-4	03-0034	80.000	250	330	87	125	105	M24	+6/-10
PKA 6-4	03-0038	117.500	300	400	88	150	95	M24	+8/-12
PKA 7-4	03-0041	195.500	400	500	88	200	130	M24	+8/-14
PKA 8-4	03-0044	294.500	500	600	130	255	150	M30 x 2	+12/-15

SERIES PKD

Used for machines that need to be anchored to the floor due to unfavourable centre of gravity conditions and low inherent rigidity.



Description

- Bolt-through Bilz precision levelling wedges PKD are used for machines where anchoring is essential due to unfavourable centre of gravity conditions.
- They can also be used for machines that have to be pushed or pulled when levelling - i.e. for machines with low intrinsic rigidity. Suitable for plastic injection moulding machines, die casting machines, planers, impact machines, cold extrusion presses etc.
- Extreme slip resistance.
- **Colour:** RAL 7037, dusty grey.
- **Fixing bolts:** Tables for the selection of available bolts can be found on p. 33.
- The delivery includes a suitable insulating washer for insulating the bolt head.

BO-MOUNTING



- Suitable for boring and milling machines, processing centres, special machines, long lathes, long planers.

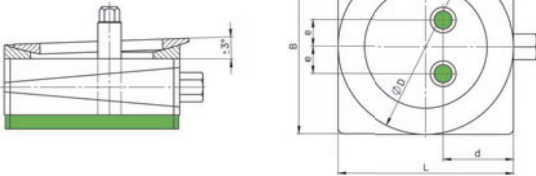
Underside: Insulation pad B0

Typ PKD BO mounting	Item no.	max. load N/Stk.	L mm	B mm	H centre position mm	d mm	e mm	Drill hole mm	Adjustment range mm
PKD 1-0	04-0003	25.000	115	115	60	50	24	22	+4/-5
PKD 2-0	04-0005	43.000	150	150	61	58	23	23	+5/-6
PKD 3-0	04-0009	77.000	200	200	63	76	27	26	+3/-7
PKD 3/72-0	04-0007	77.000	200	200	87	76	27	26	+4/-7
PKD 4-0	04-0011	97.000	200	250	87	95	27	26	+10/-7
PKD 5-0	04-0013	161.000	250	330	87	125	105	30	+6/-10
PKD 6-0	04-0015	236.000	300	400	88	150	95	30	+8/-12
PKD 7-0	04-0017	393.000	400	500	88	200	130	35	+8/-14
PKD 8-0	04-0019	591.000	500	600	130	255	150	35	+12/-15

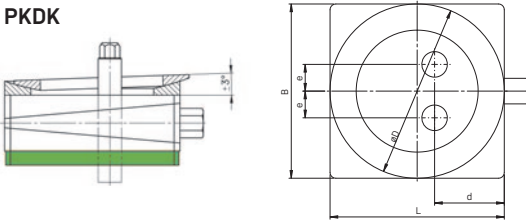
SERIES PKAK | PKDK

Can be bolted to the machine bed (PKAK) / bolt-through (PKDK) with calotte and used to compensate for angle differences, especially for machines with high geometric requirements.

PKAK



PKDK



Description

- Bilz precision levelling wedges **PKAK (bolt-on) / PKDK (bolt-through)** with spherical cap to compensate for angular differences between machines and foundations, e.g. in the case of unprocessed machine supports or uneven floors.
- For machines with a long bed and high geometric requirements.
- PKAK: The bolt-on levelling wedges remain in position even when the machine is lifted, significantly easing the installation of the machine
- **Colour:** RAL 7037, dusty grey.
- **Fixing bolts:** Tables for the selection of available bolts can be found on p. 33.
- PKDK: The delivery includes a suitable insulating washer for insulating the bolt head.

BO-MOUNTING



- With calotte
- Especially suitable for injection moulding machines, impact machines, cold extrusion presses.

Upper side: lacquered

Underside: Insulation pad B0

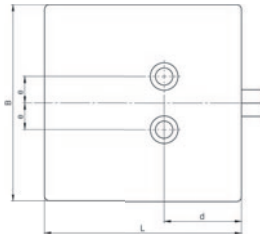
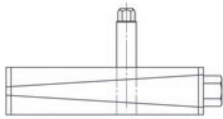
Typ PKAK BO mounting	Item no.	max. load N/Stk.	L mm	B mm	H centre position mm	ØD mm	d mm	e mm	Internal thread	Adjustment range mm
PKAK 1-0	05-0003	25.000	115	115	70	110	50	24	M16	+3/-3
PKAK 2-0	05-0008	43.000	150	150	77	150	58	23	M18	+4/-4
PKAK 3-0	05-0011	77.000	200	200	79	150	76	27	M20	+4/-6
PKAK 4-0	05-0015	97.000	200	250	103	150	95	27	M20	+10/-7

Typ PKDK BO mounting									Drill hole mm	
PKDK 1-0	06-0003	25.000	115	115	70	110	50	24	22	+4/-5
PKDK 2-0	06-0006	43.000	150	150	77	150	58	23	23	+5/-6
PKDK 3-0	06-0008	77.000	200	200	79	150	76	27	26	+3/-7
PKDK 4-0	06-0010	97.000	200	250	103	150	95	27	26	+10/-7

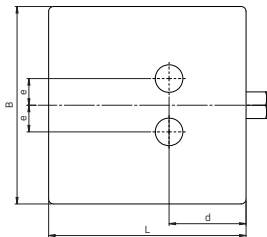
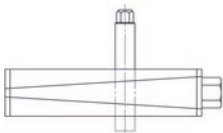
SERIES PKA-AL | PKD-AL

Easily adjustable levelling wedge with excellent wear properties, particularly suitable for EMC and clean room applications, can be bolted to the machine bed (PKA-AL) or anchored to the floor (PKD-AL).

PKA-AL



PKD-AL



Description

- Bilz precision levelling wedges **PKA-AL (bolt-on) / PKD-AL (bolt-through)** in aluminium version with hard anodising (hardcoat) are characterised by a high layer density, high hardness - up to 600 HV - and very good wear protection properties. The levelling wedge is very easy to adjust and particularly suitable for EMC applications.
- PKA-AL: The bolt-on machine feet remain in position even when the machine is lifted, significantly easing the installation of the machine.
- Can be fitted with Bilz insulation pads (also in EPDM for clean room applications).
- We supply special lubricants for applications in clean rooms.
- General tolerances according to ISO 2768 mK.
- **Colour:** Intrinsic colouring dark grey.
- **Fixing bolts:** Tables for the selection of available bolts can be found on p. 33.

VARIANTS



- Especially suitable for machines in the food and luxury food industry, packaging, chemical and pharmaceutical industry as well as for EMC and clean room applications.
- Easily adjustable, with very good wear properties.

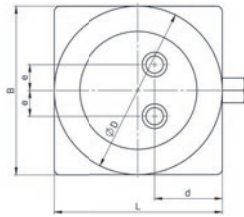
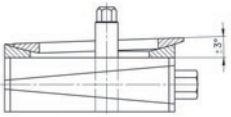
Type	Item no.	max. load N/Stk.	L mm	B mm	H centre position mm	d mm	e mm	Internal thread	Adjustment range mm
PKA 1-AL	03-0060	19.000	115	115	44	50	24	M16	+3/-3
PKA 2-AL	03-0061	32.000	150	150	47	60	24	M18	+3/-5
PKA 3-AL	03-0062	57.000	200	200	53	80	27	M20	+4/-5
PKA 4-AL	03-0063	72.000	200	250	73	95	27	M20	+9/-5

Type	Item no.	max. load N/Stk.	L mm	B mm	H centre position mm	d mm	e mm	Drill hole mm	Adjustment range mm
PKD 1-AL	04-0020	19.000	115	115	44	50	24	22	+3/-3
PKD 2-AL	04-0021	32.000	150	150	47	60	24	22	+3/-5
PKD 3-AL	04-0022	57.000	200	200	53	80	27	26	+4/-5
PKD 4-AL	04-0023	72.000	200	250	73	95	27	26	+9/-5

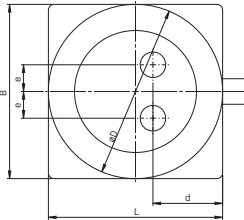
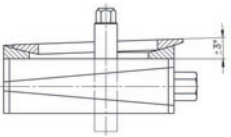
SERIES PKAK-AL | PKDK-AL

Easily adjustable levelling wedge with excellent wear properties, particularly suitable for EMC and clean room applications, can be bolted to the machine bed (PKAK-AL) or anchored to the floor (PKDK-AL), and to balance out angular differences

PKAK-AL



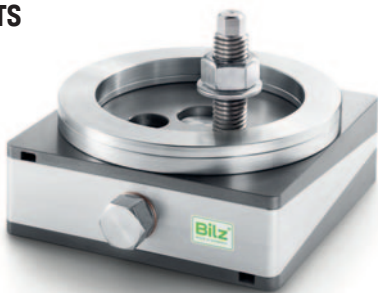
PKDK-AL



Description

- Bilz precision levelling wedges **PKAK-AL (bolt-on) / PKDK-AL (bolt-through)** in aluminium version with hard anodising (hardcoat) are notable for their high layer density, hardness - up to 600 HV, and excellent wear protection properties. The levelling wedge is very easy to adjust and particularly suitable for EMC applications.
- With calotte to balance out angular differences
- PKAK-AL: The bolt-on machine feet remain in position even when the machine is lifted, significantly easing the installation of the machine.
- Can be fitted with Bilz insulation pads (also in EPDM for clean room applications).
- We supply special lubricants for applications in clean rooms.
- General tolerances according to ISO 2768 mK.
- **Colour:** Intrinsic colouring dark grey.
- **Fixing bolts:** Tables for the selection of available bolts can be found on p. 33.

VARIANTS



- With calotte
- Especially suitable for machines in the food and luxury food industry, packaging, chemical and pharmaceutical industry as well as for EMC and clean room applications.
- Easily adjustable, with very good wear properties.

Type	Item no.	max. load	L	B	H centre position	ØD	d	e	Internal thread	Adjustment range
PKAK-AL		N/Stk.	mm	mm	mm	mm	mm	mm		mm
PKAK 1-AL	05-0018	19.000	115	115	54	110	50	24	M16	+3/-3
PKAK 2-AL	05-0019	32.000	150	150	63	150	60	24	M18	+3/-5
PKAK 3-AL	05-0020	57.000	200	200	69	150	80	27	M20	+4/-5
PKAK 4-AL	05-0021	72.000	200	250	89	150	95	27	M20	+9/-5

Type									Drill hole	
PKDK-AL									mm	
PKDK 1-AL	06-0012	19.000	115	115	54	110	50	24	22	+3/-3
PKDK 2-AL	06-0013	32.000	150	150	63	150	60	24	22	+3/-5
PKDK 3-AL	06-0014	57.000	200	200	69	150	80	27	26	+4/-5
PKDK 4-AL	06-0015	72.000	200	250	89	150	95	27	26	+9/-5

ACCESSORIES

Our accessories complete the performance requirements of our precision levelling wedges and consequently support an ideal machine arrangement.

INSULATING PADS



Structure-borne sound insulation of firmly anchored machines and pipe suspensions.

FOR BOLT HEAD INSULATION

Our insulation washers for bolt heads provide sufficient vibration and structure-borne noise insulation of fixed machines and components. They can be used at temperatures from -20 °C to +80 °C and are highly resistant to industrially used oils, greases, acids and cooling mixtures.

WALL PLUGS



Fischer heavy duty wall plug SL
SL Fischer reaction anchor R and threaded rod RG
Fischer anchor bolt FAZ

FOR FLOOR ANCHORING

Fischer anchors are part of our product range. Other models and manufacturers on request.

EXTENSION



Easy and quick alignment of the machine in confined spaces.

FOR LEVELLING WEDGE BOLT

If the levelling bolt is difficult to access, we recommend using the levelling bolt extension. This ensures quick and easy levelling even when space is limited. These levelling aids are available in different lengths and wrench widths depending on the levelling wedge shoe used. Please contact us for further details.

FIXING BOLTS

Suitable bolts and nuts with standard thread can be supplied on request. The delivery includes 1 nut and 1 washer each.

ARTICLE NUMBERS FOR BOLTS AND NUTS

PKA | PKAK

Thread	Material	Length 100 mm	Length 125 mm	Length 150 mm	Length 200 mm
M16	verzinkt	19-0323	19-0324		
	Edelstahl	18-0083	18-0080		
M18	verzinkt	19-0325	19-0357	19-0441	
	Edelstahl	18-0084			
M20	verzinkt	19-0326		19-0327	19-0308
	Edelstahl	18-0085		18-0081	
M24	verzinkt			19-0329	
	Edelstahl			18-0082	
M30×2	verzinkt			19-0242	19-0245



PKD | PKDK

Thread	Material	Length 150 mm	Length 200 mm	Length 250 mm	Length 300 mm
M16	verzinkt	19-0094	19-0098	19-0101	
	Edelstahl	18-0033	18-0036	18-0202	
M18	verzinkt	19-0136	19-0139	19-0142	
M20	verzinkt	19-0185	19-0188	19-0191	
	Edelstahl	18-0044	18-0047		
M24	verzinkt	19-0214	19-0223	19-0226	19-0229
	Edelstahl	18-0052	18-0069	18-0203	18-0204

PKA-AL | PKAK-AL

Thread	Material	Length 100 mm	Length 125 mm	Length 150 mm
M16	Edelstahl	18-0083	18-0080	
M18	Edelstahl	18-0084		
M20	Edelstahl	18-0085		18-0081

PKD-AL | PKDK-AL

Thread	Material	Length 150 mm	Length 200 mm	Length 250 mm	Length 300 mm
M16	Edelstahl	18-0033	18-0036	18-0202	
M20	Edelstahl	18-0044	18-0047		
M24	Edelstahl	18-0052	18-0069	18-0203	18-0204