

# HORIZONTAL ELEMENTS

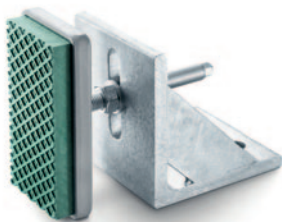
**FOR MACHINES WITH HIGH HORIZONTAL FORCES OR FOR LATERAL LINKING AND FIXING.**



All information about our horizontal elements is also available on our website.

Bilz horizontal elements are used for machines with extremely strong horizontal forces or when machines are linked and have to be fixed laterally.

## HORIZONTAL ELEMENT



**Size 1:**  
Steel angle, levelling element  
model BNVS 115/5, 3 bolts  
M16 × 150, 2 plugs M16

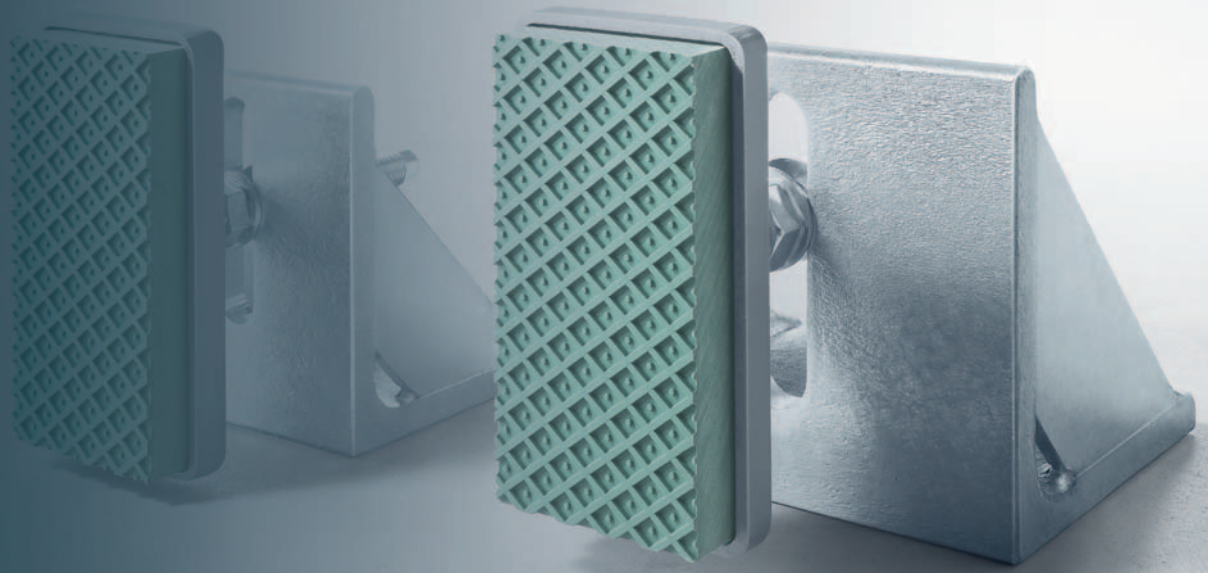
**Size 2:**  
Steel angle, levelling element  
model BNVS 115/5, 4 bolts  
M20 × 150, 3 plugs M20

## FOR LATERAL FIXATION

For machines with extremely strong horizontal forces or when machines are linked and have to be fixed laterally.

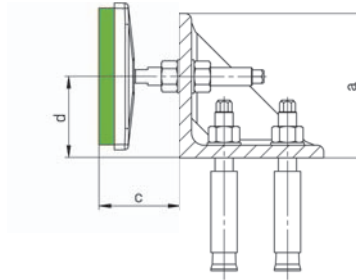
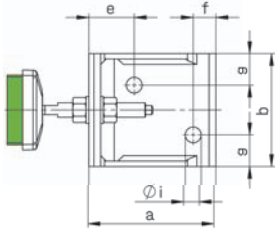
Bilz levelling elements model BNV are used as a pressure pad, which ensures vibration insulation.

Bilz horizontal elements are available in 2 sizes with 16,500 N pressure absorption.



## SIZE 1

| Type   | Item no. | max. load<br>N/Stk. | a<br>mm | b<br>mm | c<br>mm | d<br>mm | e<br>mm | f<br>mm | g<br>mm | i<br>mm |
|--------|----------|---------------------|---------|---------|---------|---------|---------|---------|---------|---------|
| Size 1 | 20-0066  | 16.500              | 140     | 125     | 75-95   | 45-115  | 50      | 25      | 35      | 18      |



## SIZE 2

| Type   | Item no. | max. load<br>N/Stk. | a<br>mm | b<br>mm | c<br>mm | d<br>mm | e<br>mm | f<br>mm | g<br>mm | i<br>mm |
|--------|----------|---------------------|---------|---------|---------|---------|---------|---------|---------|---------|
| Size 2 | 20-0067  | 16.500              | 160     | 180     | 75-95   | 46-130  | 50      | 40      | 35      | 22      |

